

2022



TOYOTA

GR86



Fun, meet finesse.

The all-new 2022 Toyota GR86 has earned its “Gazoo Racing” badge and is ready to go. Engineered with the input of track-proven drivers, the soul of the AE86 continues to live on as a modern-day sports car. Whether you’re rowing through the 6-speed manual transmission or triggering the paddle shifters, the thrill of driving is at your fingertips.



GR86 Premium shown in Halo.¹



GR86 Premium shown in Track bRED.¹



GR86 Premium shown in Halo.¹



See numbered footnotes in Disclosures section.



Born on the track. Bred for the streets.

Passion fuels innovation, and it's our passion for motorsports that fuels Toyota Gazoo Racing (TGR), Toyota's global racing division. Racing gives us the opportunity to challenge ourselves — to push the limits and create better cars. Collectively, we grow through every turn of the wrench and every turn of the wheel. This dedication led us to develop GR86, making racing-inspired sports cars accessible to the everyday driver and bringing the excitement of motorsports to the streets.



Motorsports DNA

Toyota Gazoo Racing started with our unrelenting passion for motorsports, and led to high-performance road cars with the DNA of motorsports. With heavy involvement from professional drivers and a track-proven formula for optimal engineering, the GR series was designed to leave a lasting impression.



Track-tested

Fine-tuned by track-proven and master drivers like Morizo, Akio Toyoda's alter ego, every vehicle that's earned the GR badge has been thoroughly pushed, honed and perfected through extensive testing on the racetracks.



GR86 Premium shown in both Halo' and Track bRED!



2.4L 4-cylinder boxer engine

A 2.4L flat-four boxer engine that pumps out 228 horsepower is impressive enough, but because it sits low in the chassis, the center of gravity is optimized to carve those corners.

PERFORMANCE

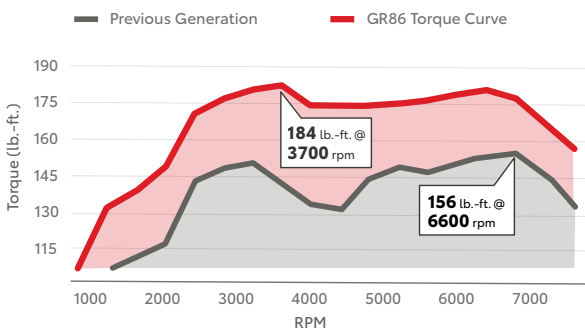
Reach peak fun.

A sports car in the purest sense, GR86's 2.4L horizontally opposed 4-cylinder boxer engine keeps the heart racing, with almost 20% more engine displacement than its predecessor. With its close-ratio 6-speed manual transmission or 6-speed auto with Dynamic Rev Management, you're in control.



6-speed manual or automatic transmission

Choose your thrill. Whether rowing through the gears of a 6-speed close-ratio manual with a short-throw shifter or triggering the paddle shifters of the 6-speed auto with Dynamic Rev Management, GR86 will always be ready for your next move.



Reengineered torque curve

Born to take on the track, GR86's optimized torque curve keeps G-force on tap as you accelerate. This provides more usable power in the lower rpm range as you reach 184 lb.-ft. of peak torque and is ready to plant you in your seat.



Track Mode

Turn on the new Track Mode to change the tach's display and bring important info like rpm and gear into focus. Vehicle Stability Control (VSC)² is also dialed back to help you reach the limits of grip, while Full-Off Mode prevents the VSC from kicking in, putting you in full control.

See numbered footnotes in Disclosures section.



GR86 Premium shown in Track bRED! Professional driver and depicted stability control off while driving on a closed course. Do not attempt.

HANDLING

Blow everyone away.

GR86 is about the connection between you and the road. Its lightweight body and low center of gravity give you the agility to handle the twists and turns, while its available 18-in. matte-black painted alloy wheels with Michelin® Pilot® Sport 4 tires³ provide a tighter grip of the road.



GR86 Premium shown in Track bRED! Professional driver and depicted stability control off while driving on a closed course. Do not attempt.



Front fender air vents

The aggressive front fenders with functional air vents help channel air around the car for more driving stability and turning performance.



Track-tuned suspension and limited-slip differential

GR86's multi-link rear suspension and stabilizer bars allow smooth wheel travel to help sharpen turns and enhance grip over uneven surfaces. During low-traction situations, a Torsen® limited-slip differential (LSD) helps improve low-end acceleration by automatically distributing power to the wheel that needs it.

See numbered footnotes in Disclosures section.



GR86 Premium shown in both Halo¹ and Track bRED²!

DESIGN

Handles sharp. Looks sharp.

GR86 returns with a fresh new look, inside and out. The sleek LED lighting on the exterior improves visibility and style, while inside, a 3-mode GR digital instrumentation panel, redesigned dashboard and center console with silver toggle switches highlight GR86's driver-focused cockpit.

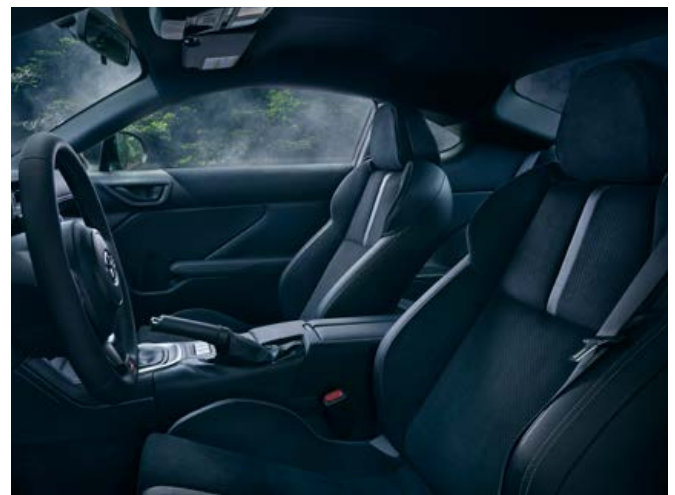


Upgraded interior

Leather and Ultrasuede^{®5} touches and aluminum pedals are available to help raise the bar on the quality inside.

Full redesign

With its refined aerodynamic profile, GR86 returns as the perfect example of functional beauty. Its long hood and short rear deck highlight racing-inspired proportions while underneath, weight was meticulously removed as much as possible for near-perfect weight distribution and highly responsive driving performance.



Up to speed with the latest tech.



GR86 Premium interior shown in Alcantara® and Black leather trim. Screen depiction accurate at time of posting.

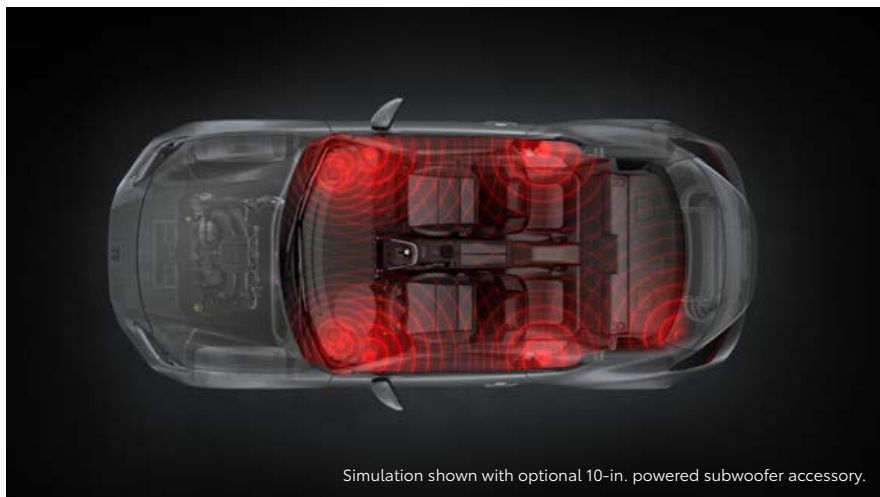
8-in. display screen with Android Auto™ and Apple CarPlay® compatibility

Inside, GR86's 8-in. touchscreen comes standard with a suite of Connected Services,¹⁹ like Android Auto™⁷ and Apple CarPlay®⁸ compatibility, that helps you seamlessly stay connected to your world while on the go. Get directions, have your messages read aloud to you, and text back by voice, all while keeping your hands on the wheel.



Digital gauge cluster

Get all the vital info you need at a glance. From the moment you power it up, GR86's fully digital instrument display welcomes you with a reminder of the FA24 boxer engine inside. The configurable 3-mode gauge cluster display allows you to toggle between Normal, Sport or Track Modes, and change the way the tachometer animates.



Simulation shown with optional 10-in. powered subwoofer accessory.

Available eight speakers

Just like the engineering under the hood, GR86's speaker system is designed to amplify every drive. Cleaner, crisper and more dynamic, its available eight-speaker sound system delivers enhanced sound quality while an available 10-in. powered subwoofer is ready to add more bass to your playlist.

SAFETY

Peace of mind for the road ahead.

It's not just the performance that's advanced. GR86 is available with the latest safety technologies to help keep you safe from start to finish.



GR86 Active Safety Suite

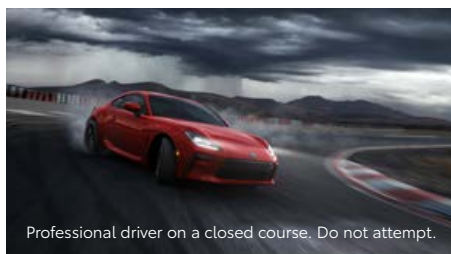
On automatic transmission models, GR86 comes standard with a number of intelligent safety features,⁹ including a Pre-Collision Braking System (PCBS),³⁴ Pre-Collision Throttle Management, Adaptive Cruise Control (ACC) with Lead Vehicle Start Alert, Lane Departure Warning with Sway Warning,¹⁰ and Automatic High Beams.¹¹

Blind Spot Detection with Rear Cross-Traffic Alert

The available Blind Spot Detection (BSD)¹² warns you when a vehicle in the next lane enters GR86's blind spot. And when you're in reverse, RCTA¹³ helps detect vehicles approaching from either side, warning you with side mirror indicators and a warning tone.

LED lighting with Adaptive Front-Lighting System

The eye-catching headlights on GR86 feature LED Daytime Running Lights (DRL) and an available Adaptive Front-Lighting System (AFS).¹⁴ At night, the AFS headlights turn alongside the front wheels, helping you see better around the next corner.



Seven airbags

With safety as a top priority, GR86 comes standard with a driver and front passenger Advanced Airbag System:¹⁵ front seat-mounted side airbags, side curtain airbags, and driver's knee airbags.

No cost maintenance plan and Roadside Assistance

Every new GR86 comes with ToyotaCare,¹⁶ a maintenance plan that covers normal factory scheduled service for 2 years or 25,000 miles, whichever comes first, and 24-hour Roadside Assistance for 2 years, unlimited mileage.



GR86



GR86 Premium

Adds to or replaces features offered on GR86

Mechanical/Performance

- ✓ FA24 2.4L naturally aspirated horizontally opposed 4-cylinder boxer-four
- ✓ 228 hp @ 7000 rpm; 184 lb.-ft. of torque @ 3700 rpm
- ✓ Short-throw 6-speed close-ratio manual transmission
- ✓ 6-speed Electronically Controlled automatic Transmission (ECT) with paddle shifters
- ✓ Torsen^{®4} limited-slip differential
- ✓ GR circuit-tuned coil springs, shock absorbers, iron front knuckles, and rear suspension-member-mounted stabilizer bar

Exterior Features

- ✓ 17-in. machined-finish alloy wheels
- ✓ Auto-leveling dual-LED headlights and turn signal indicators, Daytime Running Lights (DRL) and LED rear combination lights with rear decklid-mounted LED stop light and backup light
- ✓ Black heated power outside mirrors
- ✓ Dual chrome-tipped exhaust
- ✓ Black functional matrix front grille with G-mesh insert, GR badge and functional air inlet ducts with black accent trim
- ✓ Color-keyed roof with double bubble feature
- ✓ Functional black front-wheel arch air outlet vent

Interior Features

- ✓ GR86 Audio — includes 8-in. touchscreen, six speakers, Apple CarPlay^{®8} & Android Auto^{™7} compatible, SiriusXM^{®17} with 3-month Platinum Plan trial subscription¹⁸
- ✓ Connected Services¹⁹ — Safety Connect[®] with 1-year trial²⁰ Wi-Fi Connect with up to 2 GB within 3-month trial²¹
- ✓ Available GR86 Active Safety Suite⁹ — includes Pre-Collision Braking System (PCBS)^{3,4} Pre-Collision Throttle Management, Adaptive Cruise Control (ACC) with Lead Vehicle Start Alert, Lane Departure Warning with Sway Warning¹⁰ and Automatic High Beams¹¹ (automatic transmission only)
- ✓ Sport front bucket seats with black side bolsters and seat insert fabric with G-embossed design; 3-way adjustable driver's seat; 2-way adjustable front passenger seat
- ✓ GR digital gauge cluster with Normal/Sport/Track Modes
- ✓ Dual zone automatic climate control
- ✓ Multi-function in-key remote keyless entry system with lock, unlock, and panic; trunk-release functions; and GR Push Button Start
- ✓ Leather-wrapped parking brake handle cover with contrast stitching
- ✓ Leather gearshift boot with silver contrast stitching
- ✓ GR leather-trimmed tilt/telescopic steering wheel with contrast stitching and audio controls

Mechanical/Performance

- ✓ FA24 2.4L naturally aspirated horizontally opposed 4-cylinder boxer-four
- ✓ 228 hp @ 7000 rpm; 184 lb.-ft. of torque @ 3700 rpm
- ✓ Short-throw 6-speed close-ratio manual transmission
- ✓ 6-speed Electronically Controlled automatic Transmission (ECT) with paddle shifters
- ✓ Torsen^{®4} limited-slip differential
- ✓ GR circuit-tuned coil springs, shock absorbers, iron front knuckles, and rear suspension-member-mounted stabilizer bar

Exterior Features

- ✓ 18-in. matte-black-painted alloy wheels with Michelin[®] Pilot[®] Sport 4 tires³
- ✓ Color-keyed duckbill rear spoiler
- ✓ Adaptive Front-Lighting System (AFS)¹⁴
- ✓ Blind Spot Detection (BSD)¹² with Rear Cross-Traffic Alert (RCTA)¹³

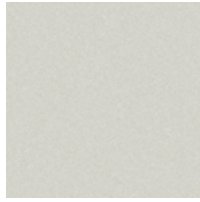
Interior Features

- ✓ GR86 Audio — includes 8-in. touchscreen, eight speakers, Apple CarPlay^{®8} & Android Auto^{™7} compatible, SiriusXM^{®17} with 3-month Platinum Plan trial subscription¹⁸
- ✓ Connected Services¹⁹ — Safety Connect[®] with 1-year trial²⁰ Wi-Fi Connect with up to 2 GB within 3-month trial²¹
- ✓ Two-stage heated sport seats with leather-trimmed bolsters and Ultrasuede^{®5} inserts; 3-way adjustable driver's seat with seatback pocket; 2-way adjustable front passenger seat with seatback pocket
- ✓ Aluminum sport pedals and footrest

GR86 COLORS & TRIMS*

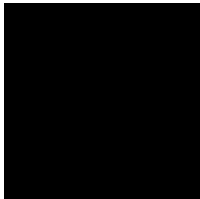
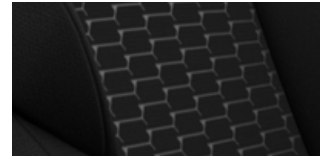


Track bRED¹



Halo¹

Black fabric



Raven



Pavement

Black Ultrasuede^{®5} with leather trim



Steel



Trueno Blue



Neptune

GR86 WHEELS



17-in. machined-finish alloy wheel for GR86



18-in. matte-black-painted alloy wheel for GR86 Premium³

*Not all colors and trims available on all model grades. See dealer for details. See numbered footnotes in Disclosures section.

GR86 ACCESSORIES

A wide range of Genuine Toyota Accessories is available to help make driving your GR86 even more fun. Now your GR86 can reflect your personal style. There's something for everyone. Some accessories may not be available in all regions of the country. For a complete list of accessories, go to toyota.com/gr86.



17-in. GR forged alloy wheels — bronzed colored



Cargo tote²²



Door edge guards



Emergency assistance kit



First aid kit with PPE



Frameless HomeLink^{®23} mirror



Paint protection kit²⁴



Cargo net²²

WARRANTIES

Every Toyota Car, Truck and SUV is built to exceptional standards. And that's not idle boasting. We back it up with these Limited Warranty Coverages:

Basic: 36 months/36,000 miles (all components other than normal wear and maintenance items).

Powertrain: 60 months/60,000 miles (engine, transmission/transaxle, drive system, seatbelts and airbags).

Rust-Through: 60 months/unlimited miles (corrosion perforation of sheet metal).

Emissions: Coverages vary under Federal and California regulations. Refer to applicable *Warranty and Maintenance Guide* for details.

Accessories: For Genuine Toyota Accessories purchased at the time of the new vehicle purchase, the Toyota Accessory Warranty coverage is in effect for 36 months/36,000 miles from the vehicle's in-service date, which is the same coverage as the Toyota New Vehicle Limited Warranty.

For Genuine Toyota Accessories purchased after the new vehicle purchase the coverage is 12 months, regardless of mileage, from the date the accessory was installed on the vehicle, or the remainder of any applicable new vehicle warranty, whichever provides greater coverage.

You may be eligible for transportation assistance if it's necessary that your vehicle be kept overnight for repairs covered under warranty. Please see your authorized Toyota dealership for further details.

For complete details about Toyota's warranties, please visit www.toyota.com, refer to the applicable *Warranty and Maintenance Guide* or see your Toyota dealer.

GR86 FEATURES²⁵

S = Standard O = Optional

Exterior

	GR86	GR86 Premium
17-in. machine-finished alloy wheels	S	
18-in. matte-black-painted alloy wheels with Michelin® Pilot® Sport 4 tires ³		S
Color-keyed duckbill rear spoiler		S
Auto-leveling projector-type headlights and LED turn signal indicators	S	
Auto-leveling projector-type headlights with Adaptive Front-Lighting System (AFS) ⁴ LED and turn signal indicators		S
LED Daytime Running Lights (DRL)	S	S
LED rear combination lights (brake and turn signal indicators) with rear decklid-mounted LED stop light and backup light	S	S
LED side marker lights	S	S
Black heated power outside mirrors	S	S
Functional black front-wheel arch air outlet vent	S	S
Black functional matrix front grille with G-mesh insert, GR badge and functional air inlet ducts with black accent trim	S	S
Black rear bumper lower valance	S	S
Color-keyed roof with double bubble feature	S	S
Rear window defogger with timer	S	S
Dual chrome-tipped exhaust	S	S
Color-keyed roof-mounted shark-fin antenna	S	S
Rear GR86 badge	S	S
Variable intermittent front windshield wipers	S	S

Interior

Rearview mirror with manual dim	S	S
Dual zone automatic climate control (with individual temperature settings for the driver and front passenger) with dual LCD toggle displays	S	S
Power windows with driver and front passenger auto up/down	S	S
Multi-function in-key remote keyless entry system with lock, unlock, and panic; trunk-release functions; and GR Push Button Start	S	S
GR engine start/stop button	S	S
7-in. Thin-Film Transistor (TFT) GR digital gauge cluster with LCD Multi-Information Display (MID) with Normal, Sport and Track Modes	S	S
GR leather-trimmed tilt/telescopic 3-spoke sport steering wheel with contrast stitching; audio and Multi-Information Display (MID) controls (manual transmission)	S	S
GR leather-trimmed tilt/telescopic 3-spoke sport steering wheel with contrast stitching; audio, Multi-Information Display (MID), GR86 Active Safety Suite ⁹ controls and paddle shifters (automatic transmission)	S	S
Hand-lever parking brake with leather-wrapped handle cover and silver contrast stitching	S	S
Leather gearshift boot with silver contrast stitching	S	S
Leather-wrapped 6-AT shift lever and knob (automatic transmission)	S	S
Leather-wrapped 6-MT shift lever and knob (manual transmission)	S	S
Sport front bucket seats with black side bolsters and seat insert fabric with G-embossed design; 3-way adjustable driver's seat; 2-way adjustable front passenger seat	S	
Two-stage heated sport seats with leather-trimmed bolsters and Ultrasuede ^{®5} inserts; 3-way adjustable driver's seat with seatback pocket; 2-way adjustable front passenger seat with seatback pocket		S
One-piece folding rear seatback with fabric trim	S	
One-piece folding rear seatback with Ultrasuede ^{®5} trim		S
Dual sun visors with vanity mirrors	S	
Dual sun visors with illuminated vanity mirrors		S
Fixed center console with covered storage compartment with two front cup holders and two USB 2.0 charging ports ²⁶ with auxiliary port (manual transmission)	S	S
Fixed center console with one open cup holder, covered storage compartment with two front cup holders and two USB 2.0 charging ports ²⁶ with auxiliary port (automatic transmission)	S	S
GR86 Audio — includes 8-in. touchscreen, six speakers, Android Auto ^{™7} & Apple CarPlay ^{®8} compatible, SiriusXM ^{®17} with 3-month Platinum Plan trial subscription. ¹⁸ See toyota.com/audio-multimedia for details. Connected Services ¹⁹ — Safety Connect [®] with 1-year trial, ²⁰ Wi-Fi Connect with up to 2 GB within 3-month trial. ²¹ See toyota.com/connected-services for details.	S	
GR86 Audio — includes 8-in. touchscreen, eight speakers, Android Auto ^{™7} & Apple CarPlay ^{®8} compatible, SiriusXM ^{®17} with 3-month Platinum Plan trial subscription. ¹⁸ See toyota.com/audio-multimedia for details. Connected Services ¹⁹ — Safety Connect [®] with 1-year trial, ²⁰ Wi-Fi Connect with up to 2 GB within 3-month trial. ²¹ See toyota.com/connected-services for details.		S
Two USB 2.0 charging ports ²⁶ with auxiliary port	S	S

GR86 FEATURES

S = Standard O = Optional

Safety and Convenience

	GR86	GR86 Premium
Vehicle Stability Control (VSC); ² Traction Control (TRAC), Anti-lock Brake System (ABS), Electronic Brake-force Distribution (EBD), and Brake Assist (BA) ²⁷	S	S
GR86 Active Safety Suite ⁹ — includes Pre-Collision Braking System (PCBS); ²⁴ Pre-Collision Throttle Management, Adaptive Cruise Control (ACC) with Lead Vehicle Start Alert, Lane Departure Warning with Sway Warning; ¹⁰ and Automatic High Beams ¹¹	S*	S*
Blind Spot Detection (BSD) ¹² with Rear Cross-Traffic Alert (RCTA) ¹³		S
Vehicle Stability Control (VSC) ² Track Mode	S	S
Backup camera ²⁸ with projected path	S	S
Hill Start Assist Control (HAC) ²⁹	S	S
Seven airbags ¹⁵ — includes driver and front passenger Advanced Airbag System, driver and front passenger outboard seat-mounted side airbags, front and rear side curtain airbags, and driver's knee airbag	S	S
Driver and front passenger headrests	S	S
Three-point seatbelts for all seating positions; driver-side Emergency Locking Retractor (ELR) and Automatic/Emergency Locking Retractor (ALR/ELR) on all passenger belts	S	S
LATCH (Lower Anchors and Tethers for Children) includes lower anchors on outboard rear seats and tether anchors on all rear seats	S	S
Tire Pressure Monitoring System (TPMS) ³⁰	S	S
Anti-theft system with alarm and engine immobilizer ³¹	S	S
ToyotaCare ¹⁶ featuring a maintenance plan with 24-hour Roadside Assistance	S	S

*Available on automatic transmission models only.

GR86 SPECIFICATIONS

Mechanical/Performance

	GR86	GR86 Premium
ENGINE		
Displacement (cc)	2387	2387
FA24 2.4L naturally aspirated horizontally opposed 4-cylinder boxer-four engine	S	S
Horsepower (hp @ rpm)	228 @ 7000	228 @ 7000
Torque (lb.-ft. @ rpm)	184 @ 3700	184 @ 3700
Ignition system — transistorized	S	S
Bore x stroke (mm.)	94.0 X 86.0	94.0 X 86.0
Valvetrain	DOHC 16-VALVE	DOHC 16-VALVE
Compression ratio	12.5 : 1	12.5 : 1
Fuel octane rating ³²	93 or more	93 or more
Maximum speed (MPH) (manual transmission)	140	140
Maximum speed (MPH) (automatic transmission)	134	134
0-60 mph (seconds) (manual transmission)	6.1	6.1
0-60 mph (seconds) (automatic transmission)	6.6	6.6
TRANSMISSION		
6-speed manual transmission (Transmission model code: TL70)	S	S
6-speed Electronically Controlled automatic Transmission (ECT) with paddle shifters (Transmission model code: TX6A)	A	A
GEAR RATIO		
Type: 6-speed manual		
1st gear: 3.626, 2nd gear: 2.189, 3rd gear: 1.541, 4th gear: 1.213, 5th gear: 1.000, 6th gear: 0.767, reverse: 3.438	S	S
Type: 6-speed automatic		
1st gear: 3.538, 2nd gear: 2.060, 3rd gear: 1.404, 4th gear: 1.000, 5th gear: 0.713, 6th gear: 0.582, reverse: 3.168	S	S
FUEL INJECTION SYSTEM		
Toyota D-4S Direct-Injection Fuel System	S	S
DRIVETRAIN		
Front engine, Rear-Wheel Drive (RWD)	S	S
Torsen ^{®4} limited-slip differential (LSD)	S	S
AXLE RATIO		
4.100 — manual transmission	S	S
3.909 — automatic transmission	S	S
BODY CONSTRUCTION		
Reinforced unibody construction with lightweight, low center of gravity design	S	S
Coefficient of drag (Cd)	0.276	0.276
SUSPENSION		
GR circuit-tuned coil springs, shock absorbers, iron front knuckles, and rear suspension-member-mounted stabilizer bar	S	S
MacPherson strut front suspension and multilink rear suspension	S	S
Stabilizer bar diameter, front/rear (mm.)	18/15	18/15

See numbered footnotes in Disclosures section.

GR86 SPECIFICATIONS

S = Standard O = Optional A = Available

STEERING	GR86	GR86 Premium
GR circuit-tuned Electric Power Steering (EPS); power-assisted rack-and-pinion	S	S
Steering wheel turns (lock-to-lock)	2.5	2.5
Turning circle radius (m)	5.4	5.4
BRAKES		
Center hand brake	S	S
2-piston steel floating-caliper front disc brakes with 11.6-in. (294 mm.) ventilated rotors; 1-piston steel floating-caliper rear disc brakes with 11.4-in. (290 mm.) solid rotors	S	S
Anti-lock Braking System (ABS)	S	S

Dimensions

EXTERIOR	GR86	GR86 Premium
Length (mm.)	4265	4265
Width (mm.)	1775	1775
Height (mm.)	1310	1310
Running ground clearance (mm.)	130	130
Wheelbase (mm.)	2575	2575
Track (front/rear) (mm.)	1520/1550	1520/1550
Wheel size	17 x 7 1/2 J	18 x 7 1/2 J

Weights and Capacities

Gross Vehicle Weight Rating GVWR (lb.)		
manual transmission	3682	3682
automatic transmission	3748	3748
Seating capacity	4	4
Cargo volume (trunk) (cu. ft.) ²²	6.26	6.26
Fuel capacity (gal.)	13.2	13.2

Tires

Type	Michelin® Primacy HP summer tires (215/45R17)	Performance Michelin® Pilot Sport 4 summer tires ³ (215/40R18)
Spare	Tire repair kit	Tire repair kit

Mileage Estimates (mpg city/highway/combined)³³

Manual transmission	20/27/22	20/27/22
Automatic transmission	21/31/25	21/31/25

DISCLOSURES

1. Extra-cost color. 2. Vehicle Stability Control is an electronic system designed to help the driver maintain vehicle control under adverse conditions. It is not a substitute for safe and attentive driving practices. Factors including speed, road conditions, weather and driver steering input can all affect whether VSC will be effective in preventing a loss of control. See *Owner's Manual* for additional limitations and details. 3. Performance tires are expected to experience greater tire wear than conventional tires. Tire life may be less than 24,000 miles, depending upon driving conditions. 4. Torsen® is a registered trademark of Zexel Torsen, Inc. 5. Ultrasuede® is a registered trademark of Toray Industries, Inc. 6. Alcantara® is a registered trademark of Alcantara S.p.A. 7. Vehicle user interface is a product of Google and its terms and privacy statement apply. To use Android Auto on your audio display, you'll need an Android Auto compatible vehicle and Android phone. For phone compatibility visit: <https://www.android.com/auto/>. Requires compatible smartphone connected with an approved data cable into the USB media port, and data plan rates apply. Apps and services vary by phone carrier and are subject to change at any time without notice. Android, Android Auto and Waze are trademarks of Google. 8. Apps and services are subject to change at any time without notice. Data charges may apply. Apple CarPlay® functionality requires a compatible iPhone® connected with an approved data cable into the USB media port. Apple CarPlay® is a registered trademark of Apple Inc. 9. GR86 Active Safety Suite effectiveness is dependent on many factors including road, weather and vehicle conditions. Drivers are responsible for their own safe driving. Always pay attention to your surroundings and drive safely. See *Owner's Manual* for additional limitations and details. 10. Lane Departure Alert with Sway Warning System is designed to read visible lane markers under certain conditions, and provide visual and audible alerts when it detects a pattern of vehicle movement that might indicate driver inattention or drowsiness. It is not a collision-avoidance system or a substitute for safe and attentive driving. Effectiveness is dependent on many factors including road, weather and vehicle conditions. See *Owner's Manual* for additional limitations and details. 11. Automatic High Beams operate at speeds above 25 mph. Factors such as a dirty windshield, weather, lighting and terrain limit effectiveness, requiring the driver to manually operate the high beams. See *Owner's Manual* for additional limitations and details. 12. Do not rely exclusively on the Blind Spot Detection. Always look over your shoulder and use your turn signal. There are limitations to the function, detection and range of the monitor. See *Owner's Manual* for additional limitations and details. 13. Do not rely exclusively on the Rear Cross-Traffic Alert system. Always look over your shoulder and use your mirrors to confirm rear clearance. There are limitations to the function, detection and range of the system. See *Owner's Manual* for additional limitations and details. 14. The Adaptive Front-Lighting System helps improve night vision. Situations such as a dirty windshield, rapidly changing light conditions or hilly terrain may limit effectiveness, requiring the driver to manually turn off the system. See *Owner's Manual* for additional limitations and details. 15. Airbag systems are Supplemental Restraint Systems and are designed to inflate only under certain conditions and in certain types of severe collisions. To decrease the risk of injury from an inflating airbag, always wear seatbelts and sit upright in the middle of the seat as far back as possible. Do not put objects in front of an airbag or around the seatback. Do not use a rearward-facing child seat in any front passenger seat. See *Owner's Manual* for additional limitations and details. 16. ToyotaCare covers normal factory scheduled maintenance for two years or 25,000 miles, whichever comes first. Certain models require a different maintenance schedule as described in their *Maintenance Guide*. 24-hour Roadside Assistance is also included for two years, unlimited mileage. Roadside Assistance does not include parts and fluids, except emergency fuel delivery. See Toyota dealer for details and exclusions. Valid only in the continental U.S. 17. Trial length and service availability may vary by model, model year or trim. Service will automatically stop at the end of your trial subscription period unless you decide to continue service. If you do not wish to enjoy your trial, you can cancel by calling the number below. All SiriusXM services require a subscription, each sold separately by SiriusXM after the trial period. **Service subject to the SiriusXM Customer Agreement and Privacy Policy; visit www.siriusxm.com to see complete terms and how to cancel which includes calling 1-866-635-2349.** Some services and features are subject to device capabilities and location availability. All fees, content and features are subject to change. SiriusXM, Pandora and all related logos are trademarks of Sirius XM Radio Inc. and its respective subsidiaries. 18. SiriusXM trial length and service availability may vary by model, model year or trim. 19. Connected Services depends on factors outside of Toyota's control, including an operative telematics device, a cellular connection, GPS signal, and the availability of a compatible wireless network, without which system functionality and availability may be limited or precluded, including access to response center and emergency support. Service may vary by vehicle and region. Subscription required after trial. Terms of Use apply. Data charges may apply. Apps and services subject to change at any time without notice. See toyota.com/connected-services for details. To learn about Toyota's data collection, use, sharing and retention practices, please visit <https://www.toyota.com/privacvts>. Stolen vehicle police report required to use Stolen Vehicle Locator. Connected Services by Toyota trials are at no extra cost. All trials begin on the original date of purchase or lease of a new vehicle, with the exception of Wi-Fi for which the trial begins at the time of activation. Paid subscription required after trial in order to continue accessing the respective services. Terms of Use apply. 20. Safety Connect® depends on factors outside of Toyota's control, including an operative telematics device, a cellular connection, GPS signal, and the availability of a compatible wireless network, without which system functionality and availability may be limited or precluded, including access to response center and emergency support. Stolen vehicle police report required to use Stolen Vehicle Locator. Some features may require the Toyota app. Registration required. Subscription required after trial. Service subject to change at any time without notice. Terms of Use apply. Data charges may apply. Service may vary by vehicle and region. See usage precautions and service limitations in *Owner's Manual* and at toyota.com/connected-services/ for additional details. To learn about Toyota's data collection, use, sharing and retention practices, please visit <https://www.toyota.com/privacvts/>. The Safety Connect® trial period is at no extra cost and begins on the original date of purchase or lease of a new vehicle. Paid subscription required after trial to access the service. 21. Eligible vehicle and wireless service required. Wi-Fi Connect depends on factors outside of Toyota's control, including an operative telematics device, a cellular connection, GPS signal, and the availability of a compatible wireless network, without which system functionality and availability may be limited or precluded. Wi-Fi Connect coverage and service not available everywhere. Valid in the contiguous U.S. and Alaska. Do not drive distracted. Go to att.com/toyota for terms and conditions. Data usage and charges apply. Up to 5 devices can be supported using in-vehicle connectivity. Apps and services subject to change at any time without notice. The Wi-Fi Connect trial begins at the time of activation and expires when 2GB of data is used or when the 3-month period ends. Subscription required after trial. Terms and conditions apply. 22. Cargo and load capacity limited by weight and distribution. Always properly secure cargo and cargo area. 23. HomeLink® and the HomeLink® house icon are registered trademarks of Genex Corporation. 24. Genuine Toyota Paint Protection Film by 3M™ is designed for specific sections of the vehicle most prone to chipping and may vary depending on vehicle model. Select applications may require an additional charge. Toyota Genuine Accessory Warranty only applies when installation is performed by a trained Toyota-approved installer. See Toyota dealer for details. 25. Toyota strives to build vehicles to match customer interest and thus they typically are built with popular options and option packages. Not all options/packages are available separately and some may not be available in all regions of the country. See toyota.com for information about options/packages commonly available in your area. If you would prefer a vehicle without any or with different options, contact your dealer to check for current availability or the possibility of placing a special order. Color(s) depicted may vary based on multiple factors, including ambient lighting and the format in which it is being viewed (e.g., computer, mobile device or print). 26. May not be compatible with all mobile phones, MP3/WMA players and like models. 27. Brake Assist is designed to help the driver take advantage of ABS and is not a substitute for safe driving practices. Braking effectiveness also depends on proper vehicle maintenance, tire and road conditions. See *Owner's Manual* for additional limitations and details. 28. The backup camera does not provide a comprehensive view of the rear area of the vehicle and you should also look around the vehicle, using mirrors to confirm rearward clearance. Environmental conditions may limit effectiveness and view may become obscured. See *Owner's Manual* for additional limitations and details. 29. Hill Start Assist Control is designed to help minimize backward rolling on steep ascents. It is not a substitute for safe driving judgment and practices. Factors including speed, grade, surface conditions and driver input can all affect whether HAC will be effective in preventing a loss of control. See *Owner's Manual* for additional limitations and details. 30. The Tire Pressure Monitor System alerts the driver when tire pressure is critically low. For optimal tire wear and performance, tire pressure should be checked regularly with a gauge; do not rely solely on the monitor system. See *Owner's Manual* for additional limitations and details. 31. The engine immobilizer is a state-of-the-art anti-theft system that is initiated when you insert your key into the ignition switch or bring a Smart Key fob into the vehicle. The engine will only start if the code in the transponder chip inside the key/fob matches the code in the vehicle's immobilizer. The transponder chip is embedded in the key/fob and can be costly to replace. If you lose a key or fob, your Toyota dealer can help or go to www.aloa.org to find a qualified locksmith in your area who can perform high-security key service. 32. Ratings achieved using the required premium unleaded gasoline with an octane rating of 93 (AKI) or higher. If premium fuel is not used, performance will decrease. If unleaded gasoline with an octane rating of 93 (AKI) is not available, unleaded gasoline with an octane rating of 89 (AKI) may be used. See *Owner's Manual* for details. 33. EPA-estimated 21 city/31 hwy/25 combined mpg rating for 2022 GR86 with automatic transmission; EPA-estimated 20 city/27 hwy/22 combined mpg rating for 2022 GR86 with 6-speed manual transmission. Use for comparison purposes only. Your mileage will vary for many reasons, including your vehicle's condition and how/where you drive. See www.fueleconomy.gov. 34. The Pre-Collision Braking System (PCBS) is designed to determine if impact is imminent and help reduce impact speed and damage in certain frontal collisions. PCBS is not a substitute for safe and attentive driving. System effectiveness depends on many factors, such as speed, size and position of the vehicle and weather, light and road conditions. See *Owner's Manual* for additional limitations and details.

Toyota strives to build vehicles to match customer interest and thus they typically are built with popular options and option packages. Not all options/packages are available separately and some may not be available in all regions of the country. See toyota.com for information about options/packages commonly available in your area. If you would prefer a vehicle without any or with different options, contact your dealer to check for current availability or the possibility of placing a special order.

Color(s) depicted may vary based on multiple factors, including ambient lighting and the format in which it is being viewed (e.g., computer, mobile device or print).

Some vehicles are shown with available equipment. Seatbelts should be worn at all times. For details on vehicle specifications, standard features and available equipment in your area, contact your Toyota dealer. A vehicle with particular equipment may not be available at the dealership. Ask your Toyota dealer to help locate a specifically equipped vehicle.

All information presented herein is based on data available at the time of posting, is subject to change without notice and pertains specifically to mainland U.S.A. vehicles only. Vehicles shown may be prototypes, shown using visual effects and/or shown with options. Actual models may vary.



For Toyota Mobility program details, go to www.toyota.com/mobility or call the Toyota Brand Engagement Center at 1-800-331-4331